

CNC machine hose for the woodworking industry, reinforced + for higher vacuum, highly flexible + compressible 4:1

Applications

- extraction unit, dedusting system, filter system, oil mist extraction
- wood dust extraction, wood chips: furniture production, saw mill
- wood dust extraction: CNC machine, CNC machining center (especially for fast moving systems)
- bellows, compensators

Properties

- heavy duty
- highly flexible + compressible 4:1
- highly abrasion resistant

- increased pressure and vacuum resistance
- microbe resistant
- good resistance to oil, gasoline and chemicals
- flame-retardant according to: DIN 4102-B1
- conforms to the safety regulations of the German Wood Trade Association
- according to DIN 26057 Type 2
- conforms to RoHS guideline

Temperature Range

- -40°C to 90°C
- short time to 125°C

Design, Material

patented PROTAPE® tape hose

1. spring steel wire integrated in wall
2. wall: premium polyurethane, resistant to aggressive wood types and wood preservatives, with flame-retardant additive (Pre-PUR®)
3. wall thickness 0,7 mm approx.

Delivery variants

- further diameters and lengths available on request
- transparent + partially silver coloured (standard)
- special colours: partially coloured, completely coloured
- customer-specific branding

I.D. in / mm	O.D. mm	Under- pressure bar	Bending Radius mm	Weight kg/m	Dimensions in Stock m	Further Production Lengths m	Order No.
8 / 200-203	211	0,035	128	1,900	6 12	-	532-0200-2533
- / 225	236	0,025	143	2,100	6 12	-	532-0225-2533
9 / 228-229	239	0,025	148	2,125	-	6 12	532-0228-2533
- / 250	261	0,015	158	2,300	6 12	-	532-0250-2533
10 / 254	265	0,015	160	2,340	-	6 12	532-0254-2533
11 / 280	291	0,010	176	2,600	6 12	-	532-0280-2533
- / 300	311	0,010	188	2,800	6 12	-	532-0300-2533
12 / 305	316	0,010	191	2,850	-	6 12	532-0305-2533
- / 315	326	0,010	197	2,950	6 12	-	532-0315-2533
14 / 356	367	0,005	222	3,300	6 12	-	532-0356-2533
- / 400	411	0,005	248	3,700	6 12	-	532-0400-2533
16 / 405-406	417	0,005	253	3,755	-	6 12	532-0406-2533

Accessories



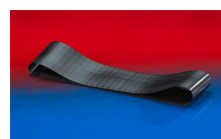
CLAMP 212



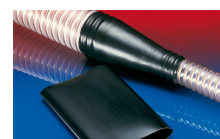
CLAMP 217



CLAMP 213



CONNECT 228



CONNECT 223



CONNECT 270-271

Overpressure and underpressure are recommended threshold operating values, products can be subjected to higher loads upon request. The bending radius is measured through the inside of the hose arch. Additional technical data at www.norres.com. The right to make technical modifications is reserved. All values determined at 20°C and are approx. data.