

Antistatic polyurethane hose, light, microbe resistant + flame-resistant

Application

- flexible hose/ ducting for gases and for abrasive dust, powder, fibres
- printed circuit board drilling machine (PCB)
- extraction unit, dedusting system, filter system, oil mist extraction
- extraction arm
- chemical industry: chemical vapours, vapour return hose at loading arm, paint steam, spray mist extraction
- explosion hazard area
- animal stall, animal shed: barn ventilation
- clean room ventilation, semiconductor production machine
- surface preparation: shot blasting/ sand blasting recovery e.g. at blasting chamber, ship yard, stripping machine, flooring preparation machine, grinding machine
- heating hose: exterior hose as protection hose

Properties

- lightweight and reinforced

- lightweight and reinforced
- highly flexible + compressible 3:1
- abrasion-resistant
- microbe resistant
- good resistance to oil, gasoline and chemicals
- very good low temperature flexibility
- flame-retardant according to: UL94-HB
- flame-retardant according to: DIN 4102-B1
- permanently antistatic wall: according to ISO 8031 electrical and surface resistance $<10^9 \Omega$ (according to NFPA 652 $10^8-10^9 \Omega$)
- in accordance with ATEX 2014/34/EU (1999/92/EC) and German TRGS 727: aspiration of combustible dust (zone 22 inside), for conveying of non-flammable liquids, for use in zone 1 and 2 (gases)
- conforms to the safety regulations of the German Wood Trade Association
- conforms to RoHS guideline
- REACH according to --> Technology / Technical Information / REACH

- 40 °C to 90 °C
- short time to 125 °C

Design

- patented PROTAPE® tape hose
- spring steel wire integrated in wall
- wall: permanently antistatic premium ester-polyurethane (Pre-PUR®)
- wall thickness 0,6 mm approx.

Delivery variants

- further diameters and lengths available on request
- transparent (standard)
- special colours: partially coloured, completely coloured
- customer-specific branding

I.D. (in / mm)	outer Ø (mm)	Pressure DIN 26057 (50% Elongation) (bar)	Vacuum DIN 26057 (axially fixed) (bar)	Bending Radius (mm)	Weight (kg/m)	Minimum Quantity (m)	Dimensions in Stock (m)	Order No.
standard								
1 / 25	32.00	1,605 (4,18)	0,540 (1,00)	20.00	0.15	-	5 10 15	330-0025-1002
- / 30	37.00	1,350 (3,50)	0,450 (1,00)	22.00	0.18	-	5 10 15	330-0030-1002
1,25 / 32	39.00	1,265 (3,29)	0,420 (1,00)	23.00	0.19	-	5 10 15	330-0032-1002
1,5 / 38	45.00	1,075 (2,78)	0,355 (0,77)	26.00	0.22	-	5 10 15	330-0038-1002
- / 40	47.00	1,020 (2,64)	0,335 (0,69)	27.00	0.23	-	5 10 15	330-0040-1002
2 / 50-51	58.00	0,820 (2,12)	0,220 (0,87)	33.00	0.37	-	5 10 15	330-0050-1002
2,36 / 60	68.00	0,685 (1,77)	0,180 (0,61)	38.00	0.43	-	5 10 15	330-0060-1002
2,5 / 63-65	73.00	0,635 (1,64)	0,165 (0,52)	41.00	0.46	-	5 10 15	330-0065-1002
- / 70	78.00	0,590 (1,52)	0,155 (0,45)	43.00	0.50	-	5 10 15	330-0070-1002
3 / 75-76	83.00	0,550 (1,42)	0,145 (0,40)	46.00	0.53	-	5 10 15	330-0075-1002
- / 80	88.00	0,515 (1,33)	0,135 (0,35)	48.00	0.57	-	5 10 15	330-0080-1002
3,5 / 89-90	98.00	0,460 (1,19)	0,120 (0,28)	53.00	0.63	-	5 10 15	330-0090-1002
4 / 100-102	108.00	0,415 (1,07)	0,080 (0,31)	58.00	0.67	-	5 10 15	330-0100-1002
- / 110	118.00	0,375 (0,97)	0,070 (0,26)	63.00	0.73	-	5 10 15	330-0110-1002
4,5 / 114-115	123.00	0,360 (0,93)	0,070 (0,24)	66.00	0.76	-	5 10 15	330-0115-1002
4,72 / 120	128.00	0,345 (0,89)	0,065 (0,22)	68.00	0.79	-	5 10 15	330-0120-1002
5 / 125-127	133.00	0,335 (0,86)	0,065 (0,20)	71.00	0.83	-	5 10 15	330-0125-1002

Overpressure and underpressure are recommended threshold operating values, products can be subjected to higher loads upon request. The bending radius is measured through the inside of the hose arch. The right to make technical modifications is reserved. All values determined at 20 °C and are approx. data. Additional information at www.norres.com/en/technology/



I.D.	outer Ø	Pressure DIN 26057 (50% Elongation)	Vacuum DIN 26057 (axially fixed)	Bending Radius	Weight	Minimum Quantity	Dimensions in Stock	Order No.
(in / mm)	(mm)	(bar)	(bar)	(mm)	(kg/m)	(m)	(m)	
- / 130	138.00	0,320 (0,82)	0,060 (0,19)	73.00	0.86	-	5 10 15	330-0130-1002
5,5 / 140	148.00	0,295 (0,76)	0,055 (0,16)	78.00	0.92	-	5 10 15	330-0140-1002
6 / 150-152	158.00	0,275 (0,71)	0,055 (0,14)	83.00	0.99	-	5 10 15	330-0150-1002
6,3 / 160	168.00	0,260 (0,67)	0,050 (0,12)	88.00	1.05	-	5 10 15	330-0160-1002
- / 170	178.00	0,245 (0,63)	0,045 (0,11)	93.00	1.11	-	5 10 15	330-0170-1002
- / 175	183.00	0,240 (0,61)	0,045 (0,10)	96.00	1.14	-	5 10 15	330-0175-1002
7 / 178-180	188.00	0,230 (0,59)	0,045 (0,10)	98.00	1.17	-	5 10 15	330-0180-1002
8 / 200-203	208.00	0,210 (0,54)	0,030 (0,11)	108.00	1.33	-	5 10 15	330-0200-1002
- / 225	233.00	0,185 (0,48)	0,025 (0,09)	121.00	1.48	-	5 10	330-0225-1002
- / 250	258.00	0,165 (0,43)	0,025 (0,07)	133.00	1.64	-	5 10	330-0250-1002
10 / 254	262.00	0,165 (0,42)	0,025 (0,06)	135.00	1.66	-	5 10	330-0254-1002
11 / 280	288.00	0,150 (0,38)	0,020 (0,05)	148.00	1.83	-	5 10	330-0280-1002
- / 300	309.00	0,140 (0,36)	0,020 (0,05)	159.00	2.14	-	5 10	330-0300-1002
12 / 305	314.00	0,135 (0,35)	0,020 (0,05)	162.00	2.17	-	5 10	330-0305-1002
- / 315	324.00	0,135 (0,34)	0,020 (0,05)	167.00	2.24	-	5 10	330-0315-1002
- / 350	359.00	0,120 (0,31)	0,020 (0,04)	184.00	2.49	-	5 10	330-0350-1002
14 / 356	365.00	0,115 (0,30)	0,015 (0,03)	187.00	2.53	-	5 10	330-0356-1002
- / 400	409.00	0,105 (0,27)	0,015 (0,02)	209.00	2.84	-	5 10	330-0400-1002
- / 450	459.00	0,095 (0,24)	0,015 (0,02)	234.00	3.19	-	5 10	330-0450-1002
- / 500	510.00	0,085 (0,21)	0,015 (0,02)	260.00	4.39	-	5 10	330-0500-1002

neutral imprint: <ID> antistatic + microbe resistant <neutral batch no.> / no cutting

1,5 / 38	45.00	1,075 (2,78)	0,355 (0,77)	26.00	0.22	-	10	330-0038-0007
- / 40	47.00	1,020 (2,64)	0,335 (0,69)	27.00	0.23	-	10	330-0040-0007
2 / 50-51	58.00	0,820 (2,12)	0,220 (0,87)	33.00	0.37	-	10	330-0050-0007
2,36 / 60	68.00	0,685 (1,77)	0,180 (0,61)	38.00	0.43	-	10	330-0060-0007
2,5 / 63-65	73.00	0,635 (1,64)	0,165 (0,52)	41.00	0.46	-	10	330-0065-0007
- / 70	78.00	0,590 (1,52)	0,155 (0,45)	43.00	0.50	-	10	330-0070-0007
3 / 75-76	83.00	0,550 (1,42)	0,145 (0,40)	46.00	0.53	-	10	330-0075-0007
- / 80	88.00	0,515 (1,33)	0,135 (0,35)	48.00	0.57	-	10	330-0080-0007
4 / 100-102	108.00	0,415 (1,07)	0,080 (0,31)	58.00	0.67	-	10	330-0100-0007
4,72 / 120	128.00	0,345 (0,89)	0,065 (0,22)	68.00	0.79	-	10	330-0120-0007
5 / 125-127	133.00	0,335 (0,86)	0,065 (0,20)	71.00	0.83	-	10	330-0125-0007
5,5 / 140	148.00	0,295 (0,76)	0,055 (0,16)	78.00	0.92	-	10	330-0140-0007
6 / 150-152	158.00	0,275 (0,71)	0,055 (0,14)	83.00	0.99	-	10	330-0150-0007
6,3 / 160	168.00	0,260 (0,67)	0,050 (0,12)	88.00	1.05	-	10	330-0160-0007
7 / 178-180	188.00	0,230 (0,59)	0,045 (0,10)	98.00	1.17	-	10	330-0180-0007
8 / 200-203	208.00	0,210 (0,54)	0,030 (0,11)	108.00	1.33	-	10	330-0200-0007
- / 225	233.00	0,185 (0,48)	0,025 (0,09)	121.00	1.48	-	10	330-0225-0007
- / 250	256.00	0,165 (0,43)	0,025 (0,07)	133.00	1.64	-	10	330-0250-0007
- / 300	309.00	0,140 (0,36)	0,020 (0,05)	159.00	2.14	-	10	330-0300-0007

more compressed packaging approx. 4:1, neutral imprint, no cutting

1,5 / 38	45.00	1,075 (2,78)	0,355 (0,77)	26.00	0.19	150	-	330-0038-2030
- / 40	47.00	1,020 (2,64)	0,335 (0,69)	27.00	0.20	150	-	330-0040-2030
2 / 50-51	58.00	0,820 (2,12)	0,220 (0,87)	33.00	0.26	150	-	330-0050-2030
2,36 / 60	68.00	0,685 (1,77)	0,180 (0,61)	38.00	0.31	150	-	330-0060-2030
2,5 / 63-65	73.00	0,635 (1,64)	0,165 (0,52)	41.00	0.33	150	-	330-0065-2030
- / 70	78.00	0,590 (1,52)	0,155 (0,45)	43.00	0.39	150	-	330-0070-2030
3 / 75-76	83.00	0,550 (1,42)	0,145 (0,40)	46.00	0.38	100	-	330-0075-2030
- / 80	88.00	0,515 (1,33)	0,135 (0,35)	48.00	0.41	100	-	330-0080-2030
4 / 100-102	108.00	0,415 (1,07)	0,080 (0,31)	58.00	0.48	100	-	330-0100-2030

Overpressure and underpressure are recommended threshold operating values, products can be subjected to higher loads upon request. The bending radius is measured through the inside of the hose arch. The right to make technical modifications is reserved. All values determined at 20°C and are approx. data. Additional information at

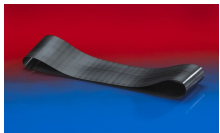
www.norres.com/en/technology/



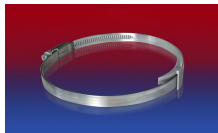
I.D.	outer Ø	Pressure DIN 26057 (50% Elongation)	Vacuum DIN 26057 (axially fixed)	Bending Radius	Weight	Minimum Quantity	Dimensions in Stock	Order No.
(in / mm)	(mm)	(bar)	(bar)	(mm)	(kg/m)	(m)	(m)	
4,72 / 120	128.00	0,345 (0,89)	0,065 (0,22)	68.00	0.56	100	-	330-0120-2030
5 / 125-127	133.00	0,335 (0,86)	0,065 (0,20)	71.00	0.59	100	-	330-0125-2030
5,5 / 140	148.00	0,295 (0,76)	0,055 (0,16)	78.00	0.65	80	-	330-0140-2030
6 / 150-152	158.00	0,275 (0,71)	0,055 (0,14)	83.00	0.70	80	-	330-0150-2030
6,3 / 160	168.00	0,260 (0,67)	0,050 (0,12)	88.00	0.74	80	-	330-0160-2030
7 / 178-180	188.00	0,230 (0,59)	0,045 (0,10)	98.00	0.83	80	-	330-0180-2030
8 / 200-203	208.00	0,210 (0,54)	0,030 (0,11)	108.00	0.93	60	-	330-0200-2030
- / 225	233.00	0,185 (0,48)	0,025 (0,09)	121.00	1.03	60	-	330-0225-2030
- / 250	256.00	0,165 (0,43)	0,025 (0,07)	133.00	1.14	50	-	330-0250-2030
- / 300	309.00	0,140 (0,36)	0,020 (0,05)	159.00	1.47	40	-	330-0300-2030

Overpressure and underpressure are recommended threshold operating values, products can be subjected to higher loads upon request. The bending radius is measured through the inside of the hose arch. The right to make technical modifications is reserved. All values determined at 20 °C and are approx. data. Additional information at www.norres.com/en/technology/

Accessories



CONNECT 228



CLAMP 210 BRIDGE
CLAMP



CONNECT 270-271



CLAMP 213



CLAMP 212



CLAMP 217



CONNECT 223

Overpressure and underpressure are recommended threshold operating values, products can be subjected to higher loads upon request. The bending radius is measured through the inside of the hose arch. The right to make technical modifications is reserved. All values determined at 20 °C and are approx. data. Additional information at www.norres.com/en/technology/