

Antistatic polyurethane hose, super-light, microbe resistant, flame-resistant

Application

- flexible hose/ ducting for gases and for abrasive dust, powder, fibres
- extraction unit, dedusting system, filter system, oil mist extraction
- extraction arm
- chemical industry: chemical vapours, vapour return hose at loading arm, paint steam, spray mist extraction
- explosion hazard area
- animal stall, animal shed: barn ventilation
- bus, utility vehicle, caravan/ trailer, mobile home/ camper/ RV, boat, ship/ vessel/ marine, yacht: ventilation, heating
- clean room ventilation, semiconductor production machine
- bellows, compensators

Properties

- super-light weight
- highly flexible + compressible 3:1
- abrasion-resistant

- abrasion-resistant
- microbe resistant
- good resistance to oil, gasoline and chemicals
- very good low temperature flexibility
- flame-retardant according to: UL94-HB
- flame-retardant according to: DIN 4102-B1
- permanently antistatic wall: according to ISO 8031 electrical and surface resistance $<10^9 \Omega$ (according to NFPA 652 $10^8-10^9 \Omega$)
- in accordance with ATEX 2014/34/EU (1999/92/EC) and German TRGS 727: aspiration of combustible dust (zone 22 inside), for conveying of non-flammable liquids, for use in zone 1 and 2 (gases)
- conforms to the safety regulations of the German Wood Trade Association
- according to DIN 26057 Type 1
- conforms to RoHS guideline
- REACH according to --> Technology / Technical Information / REACH

Temperature Range

- 40°C to 90°C

- short time to 125°C
- 40°C to 125°C

Design

- patented PROTAPE® tape hose
- spring steel wire integrated in wall
- wall: permanently antistatic premium ester-polyurethane (Pre-PUR®)
- wall thickness 0,4 mm approx.

Delivery variants

- further diameters and lengths available on request
- transparent (standard)
- special colours: partially coloured, completely coloured
- customer-specific branding
- ID 1,5"/ 38mm 12/305mm compressed packed in poly bag (low transportation cost / risk, minimum storage size), ID315 500mm not compressed

I.D. (in / mm)	outer Ø (mm)	Pressure DIN 26057 (50% Elongation) (bar)	Vacuum DIN 26057 (axially fixed) (bar)	Bending Radius (mm)	Weight (kg/m)	Minimum Quantity (m)	Dimensions in Stock (m)	Order No.
standard								
1,5 / 38	46.00	0,630 (1,86)	0,245 (0,73)	27.00	0.22	-	5 10 15	301-0038-0000
- / 40	48.00	0,600 (1,77)	0,235 (0,66)	28.00	0.23	-	5 10 15	301-0040-0000
1,75 / 44-45	53.00	0,535 (1,58)	0,210 (0,52)	31.00	0.26	-	5 10 15	301-0045-0000
2 / 50-51	58.00	0,480 (1,42)	0,170 (0,85)	33.00	0.28	-	5 10 15	301-0050-0000
2,36 / 60	68.00	0,405 (1,19)	0,145 (0,59)	38.00	0.34	-	5 10 15	301-0060-0000
2,5 / 63-65	73.00	0,370 (1,09)	0,130 (0,51)	40.00	0.36	-	5 10 15	301-0065-0000
- / 70	78.00	0,345 (1,02)	0,125 (0,44)	43.00	0.38	-	-	301-0070-0000
3 / 75-76	83.00	0,325 (0,95)	0,115 (0,39)	45.00	0.41	-	5 10 15	301-0075-0000
- / 80	88.00	0,305 (0,89)	0,110 (0,34)	48.00	0.44	-	5 10 15	301-0080-0000
3,5 / 89-90	98.00	0,270 (0,79)	0,095 (0,27)	53.00	0.49	-	5 10 15	301-0090-0000
4 / 100-102	108.00	0,245 (0,71)	0,055 (0,30)	58.00	0.51	-	5 10 15	301-0100-0000
- / 110	118.00	0,220 (0,65)	0,050 (0,25)	63.00	0.56	-	5 10 15	301-0110-0000
4,5 / 114-115	123.00	0,210 (0,62)	0,050 (0,23)	66.00	0.58	-	5 10 15	301-0115-0000
4,72 / 120	128.00	0,205 (0,59)	0,045 (0,21)	68.00	0.61	-	5 10 15	301-0120-0000
5 / 125-127	133.00	0,195 (0,57)	0,045 (0,19)	71.00	0.63	-	5 10 15	301-0125-0000
- / 130	138.00	0,185 (0,55)	0,040 (0,18)	73.00	0.66	-	5 10 15	301-0130-0000

Overpressure and underpressure are recommended threshold operating values, products can be subjected to higher loads upon request. The bending radius is measured through the inside of the hose arch. The right to make technical modifications is reserved. All values determined at 20°C and are approx. data. Additional information at www.norres.com/en/technology/



I.D.	outer Ø	Pressure DIN 26057 (50% Elongation)	Vacuum DIN 26057 (axially fixed)	Bending Radius	Weight	Minimum Quantity	Dimensions in Stock	Order No.
(in / mm)	(mm)	(bar)	(bar)	(mm)	(kg/m)	(m)	(m)	
5,5 / 140	148.00	0,175 (0,51)	0,040 (0,15)	78.00	0.71	-	5 10 15	301-0140-0000
6 / 150-152	158.00	0,160 (0,48)	0,035 (0,13)	83.00	0.76	-	5 10 15	301-0150-0000
6,3 / 160	168.00	0,150 (0,45)	0,035 (0,12)	88.00	0.81	-	5 10 15	301-0160-0000
6,5 / 165	173.00	0,150 (0,43)	0,035 (0,11)	91.00	0.83	-	5 10 15	301-0165-0000
7 / 178-180	188.00	0,135 (0,40)	0,030 (0,09)	98.00	0.90	-	5 10 15	301-0180-0000
8 / 200-203	208.00	0,120 (0,36)	0,025 (0,11)	108.00	1.03	-	5 10 15	301-0200-0000
- / 225	234.00	0,110 (0,32)	0,020 (0,08)	122.00	1.16	-	5 10	301-0225-0000
- / 250	259.00	0,100 (0,29)	0,020 (0,06)	136.00	1.28	-	5 10	301-0250-0000
10 / 254	263.00	0,095 (0,28)	0,020 (0,06)	144.00	1.30	-	5 10	301-0254-0000
11 / 280	289.00	0,085 (0,26)	0,020 (0,05)	149.00	1.43	-	5 10	301-0280-0000
- / 300	309.00	0,080 (0,24)	0,015 (0,04)	159.00	1.70	-	5 10	301-0300-0000
12 / 305	315.00	0,080 (0,23)	0,015 (0,04)	163.00	1.73	-	5 10	301-0305-0000
- / 315	325.00	0,075 (0,23)	0,015 (0,04)	168.00	1.79	-	5 10	301-0315-0000
- / 350	360.00	0,070 (0,20)	0,015 (0,03)	185.00	2.00	-	5 10	301-0350-0000
14 / 356	366.00	0,070 (0,20)	0,015 (0,03)	190.00	2.10	-	5 10	301-0356-0000
- / 400	410.00	0,060 (0,18)	0,015 (0,02)	210.00	2.26	-	5 10	301-0400-0000
- / 450	460.00	0,055 (0,16)	0,010 (0,02)	235.00	2.52	-	5 10	301-0450-0000
- / 500	510.00	0,050 (0,14)	0,010 (0,01)	260.00	2.78	-	5 10	301-0500-0000

neutral imprint: <ID> antistatic + microbe resistant <neutral batch no.> / no cutting

1,5 / 38	46.00	0,630 (1,86)	0,245 (0,73)	27.00	0.22	-	10	301-0038-0007
- / 40	48.00	0,600 (1,77)	0,235 (0,66)	28.00	0.23	-	10	301-0040-0007
2 / 50-51	58.00	0,480 (1,42)	0,170 (0,85)	33.00	0.28	-	10	301-0050-0007
2,36 / 60	68.00	0,405 (1,19)	0,145 (0,59)	38.00	0.34	-	10	301-0060-0007
2,5 / 63-65	73.00	0,370 (1,09)	0,130 (0,51)	40.00	0.36	-	10	301-0065-0007
- / 70	78.00	0,345 (1,02)	0,125 (0,44)	43.00	0.38	-	10	301-0070-0007
3 / 75-76	83.00	0,325 (0,95)	0,115 (0,39)	45.00	0.41	-	10	301-0075-0007
- / 80	88.00	0,305 (0,89)	0,110 (0,34)	48.00	0.44	-	10	301-0080-0007
4 / 100-102	108.00	0,245 (0,71)	0,055 (0,30)	58.00	0.51	-	10	301-0100-0007
4,72 / 120	128.00	0,205 (0,59)	0,045 (0,21)	68.00	0.61	-	10	301-0120-0007
5 / 125-127	133.00	0,195 (0,57)	0,045 (0,19)	71.00	0.63	-	10	301-0125-0007
5,5 / 140	148.00	0,175 (0,51)	0,040 (0,15)	78.00	0.71	-	10	301-0140-0007
6 / 150-152	158.00	0,160 (0,48)	0,035 (0,13)	83.00	0.76	-	10	301-0150-0007
6,3 / 160	168.00	0,150 (0,45)	0,035 (0,12)	88.00	0.81	-	10	301-0160-0007
7 / 178-180	188.00	0,135 (0,40)	0,030 (0,09)	98.00	0.90	-	10	301-0180-0007
8 / 200-203	208.00	0,120 (0,36)	0,025 (0,11)	108.00	1.03	-	10	301-0200-0007
- / 225	234.00	0,110 (0,32)	0,020 (0,08)	122.00	1.16	-	10	301-0225-0007
- / 250	259.00	0,100 (0,29)	0,020 (0,06)	136.00	1.28	-	10	301-0250-0007
- / 300	309.00	0,080 (0,24)	0,015 (0,04)	159.00	1.70	-	10	301-0300-0007

more compressed packaging approx. 5:1, neutral imprint, no cutting

1,5 / 38	46.00	0,630 (1,86)	0,245 (0,73)	27.00	0.22	150	-	301-0038-2030
- / 40	48.00	0,600 (1,77)	0,235 (0,66)	28.00	0.23	150	-	301-0040-2030
2 / 50-51	58.00	0,480 (1,42)	0,170 (0,85)	33.00	0.28	150	-	301-0050-2030
2,36 / 60	68.00	0,405 (1,19)	0,145 (0,59)	38.00	0.34	150	-	301-0060-2030
2,5 / 63-65	73.00	0,370 (1,09)	0,130 (0,51)	40.00	0.36	150	-	301-0065-2030
- / 70	78.00	0,345 (1,02)	0,125 (0,44)	43.00	0.38	150	-	301-0070-2030
3 / 75-76	83.00	0,325 (0,95)	0,115 (0,39)	45.00	0.41	100	-	301-0075-2030
- / 80	88.00	0,305 (0,89)	0,110 (0,34)	48.00	0.44	100	-	301-0080-2030
4 / 100-102	108.00	0,245 (0,71)	0,055 (0,30)	58.00	0.51	100	-	301-0100-2030
4,72 / 120	128.00	0,205 (0,59)	0,045 (0,21)	68.00	0.61	100	-	301-0120-2030
5 / 125-127	133.00	0,195 (0,57)	0,045 (0,19)	71.00	0.63	100	-	301-0125-2030
5,5 / 140	148.00	0,175 (0,51)	0,040 (0,15)	78.00	0.71	80	-	301-0140-2030

Overpressure and underpressure are recommended threshold operating values, products can be subjected to higher loads upon request. The bending radius is measured through the inside of the hose arch. The right to make technical modifications is reserved. All values determined at 20°C and are approx. data. Additional information at www.norres.com/en/technology/

PROTAPE® PUR 301 AS (XLD)



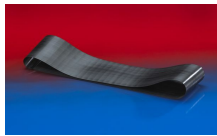
I.D.	outer Ø	Pressure DIN 26057 (50% Elongation)	Vacuum DIN 26057 (axially fixed)	Bending Radius	Weight	Minimum Quantity	Dimensions in Stock	Order No.
(in / mm)	(mm)	(bar)	(bar)	(mm)	(kg/m)	(m)	(m)	
6 / 150-152	158.00	0,160 (0,48)	0,035 (0,13)	83.00	0.76	80	-	301-0150-2030
6,3 / 160	168.00	0,150 (0,45)	0,035 (0,12)	88.00	0.81	80	-	301-0160-2030
7 / 178-180	188.00	0,135 (0,40)	0,030 (0,09)	98.00	0.90	80	-	301-0180-2030
8 / 200-203	208.00	0,120 (0,36)	0,025 (0,11)	108.00	1.03	60	-	301-0200-2030
- / 225	234.00	0,110 (0,32)	0,020 (0,08)	122.00	1.16	60	-	301-0225-2030
- / 250	259.00	0,100 (0,29)	0,020 (0,06)	136.00	1.28	50	-	301-0250-2030
- / 300	309.00	0,080 (0,24)	0,015 (0,04)	159.00	1.70	40	-	301-0300-2030

Overpressure and underpressure are recommended threshold operating values, products can be subjected to higher loads upon request. The bending radius is measured through the inside of the hose arch. The right to make technical modifications is reserved. All values determined at 20 °C and are approx. data. Additional information at www.norres.com/en/technology/

Accessories



CONNECT 270-271



CONNECT 228



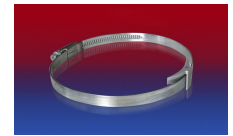
CLAMP 213



CLAMP 212



CLAMP 217



CLAMP 210 BRIDGE CLAMP



CONNECT 223

Overpressure and underpressure are recommended threshold operating values, products can be subjected to higher loads upon request. The bending radius is measured through the inside of the hose arch. The right to make technical modifications is reserved. All values determined at 20 °C and are approx. data. Additional information at www.norres.com/en/technology/